

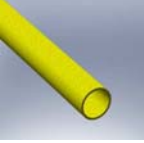



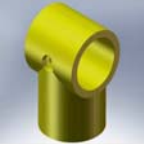
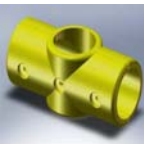




Modular Handrail System Parts List

Item	Description	Length
	FRP Stanchion Rail Ø 50x3. tube c/w 300mm insert tube	1200
	FRP Top Rail Ø 50x3.5mm tube	2997
	FRP Knee Rail Ø 50x3.5mm tube	1446
	FRP Kick Rail 100x13mm corrugated profile	4500
	FRP Kick Rail joiner Plate 75x4mm 130	
	FRP Moulded 90° Elbow connector c/w 2 option B fasteners	
	FRP Moulded Tee connector c/w 3 option B fasteners	
	FRP Moulded Cross connector c/w 3 option B fasteners	

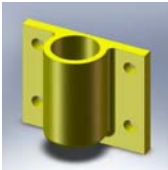


FRP Top Rail Joiner Ø 43x4mm tube

120



SU11011 FRP surface mounting base as per drawing



SU11010 FRP Side Mounted socket as per drawing

M8 Hex HD bolt x 85mm LG c/w Hex nut, flat & spring washer s/s 316

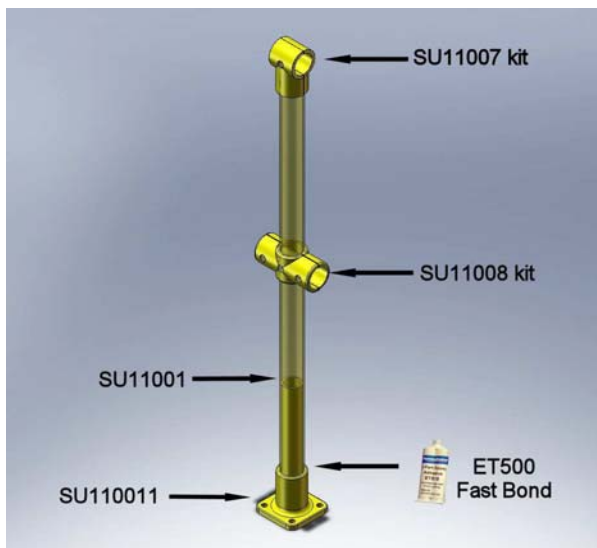
2 gauge pan HD cross recess self tapping screw x 25. Type AB Grade SS316

Option B fasteners for connectors in 316ss per set (spares)

Fast Bond Adhesive Pack 25ml

Fast Bond Adhesive Pack 50ml

Floor Mounted Handrail Post





Comprises

FRP Stanchion Rail \varnothing 50x3.5mm tube c/w 300mm insert tube

FRP Moulded Tee connector c/w 3 option B fasteners

FRP Moulded Cross connector c/w 3 option B fasteners

FRP surface mounting base as per drawing Fast Bond Adhesive Pack 25ml

Typical Example of Handrail Section

Posts at 1200mm centres

